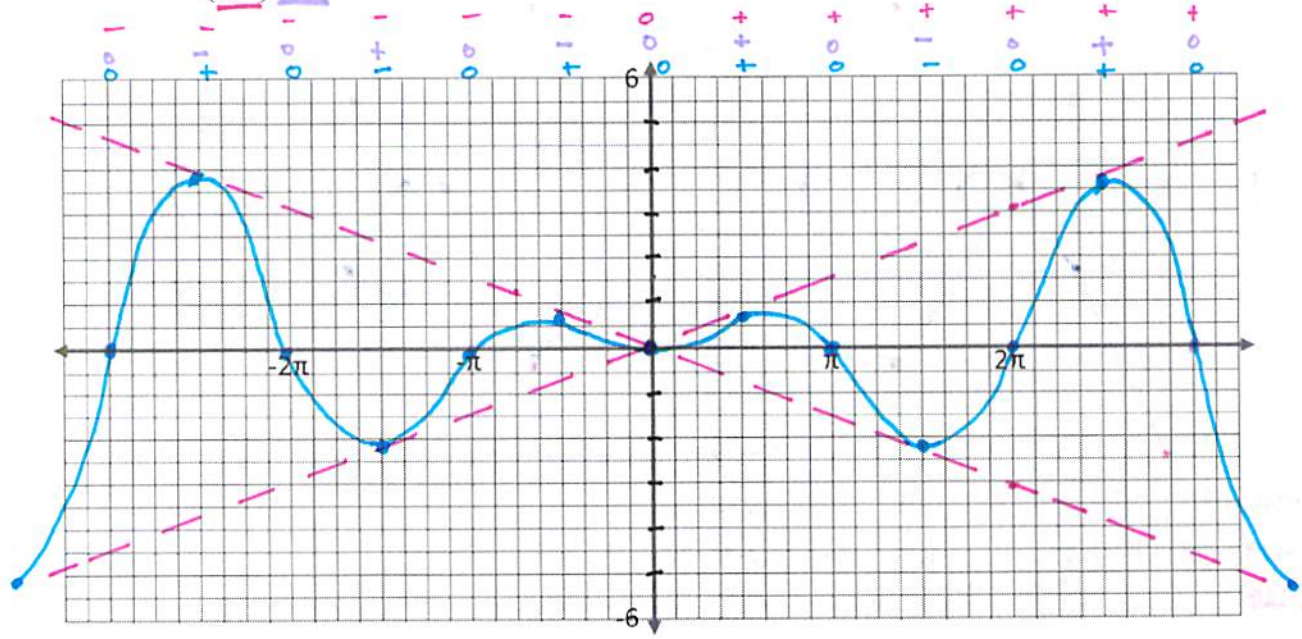
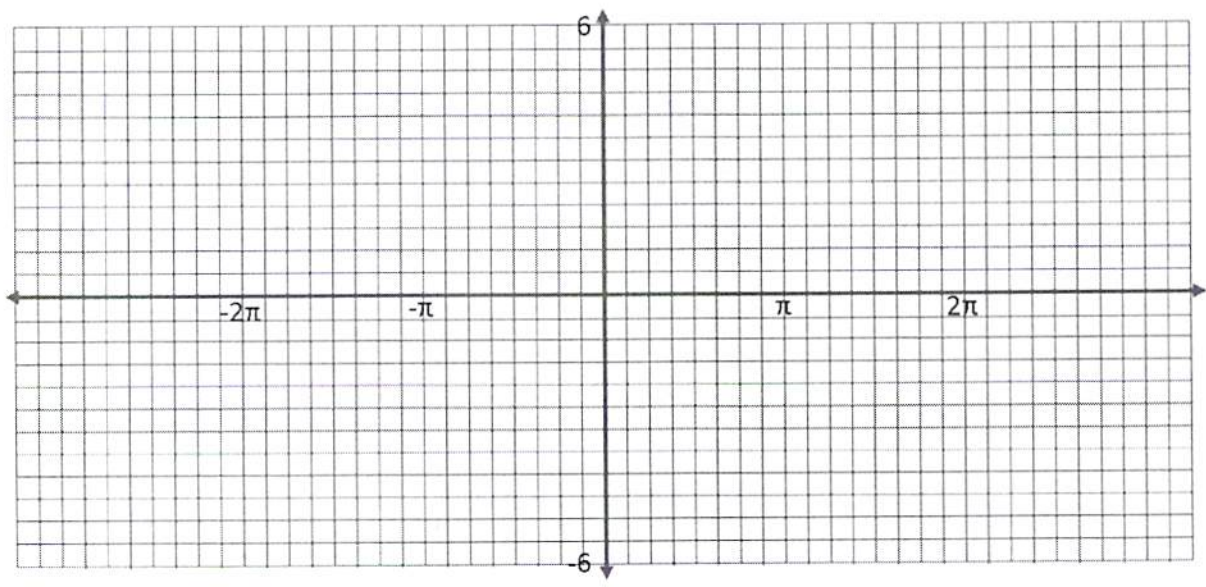


For each graph, sketch an accurate and complete graph over the domain represented on the graphing surface.

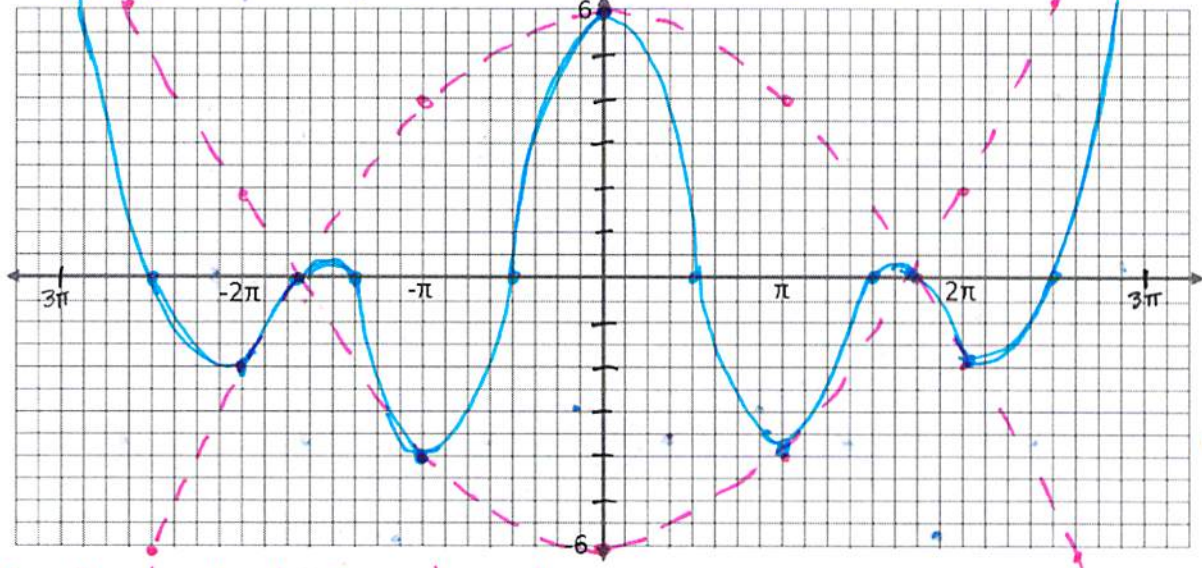
1. Graph: $y = \left(\frac{1}{2}\right)^x \sin x$



2. Graph: $y = x \cos(2x)$



3. Graph: $y = \frac{(-0.2x^2 + 6) \cos x}{x}$



x	-3π	-2π	$-\pi$	0	π	-2π	-2.5π	2.5π
$-0.2x^2 + 6$	-11.8	-1.9	4	6	4	-1.9	-6.3	6.3

AND FLIP

4. Graph: $y = (|x| + 2) \cos x$

