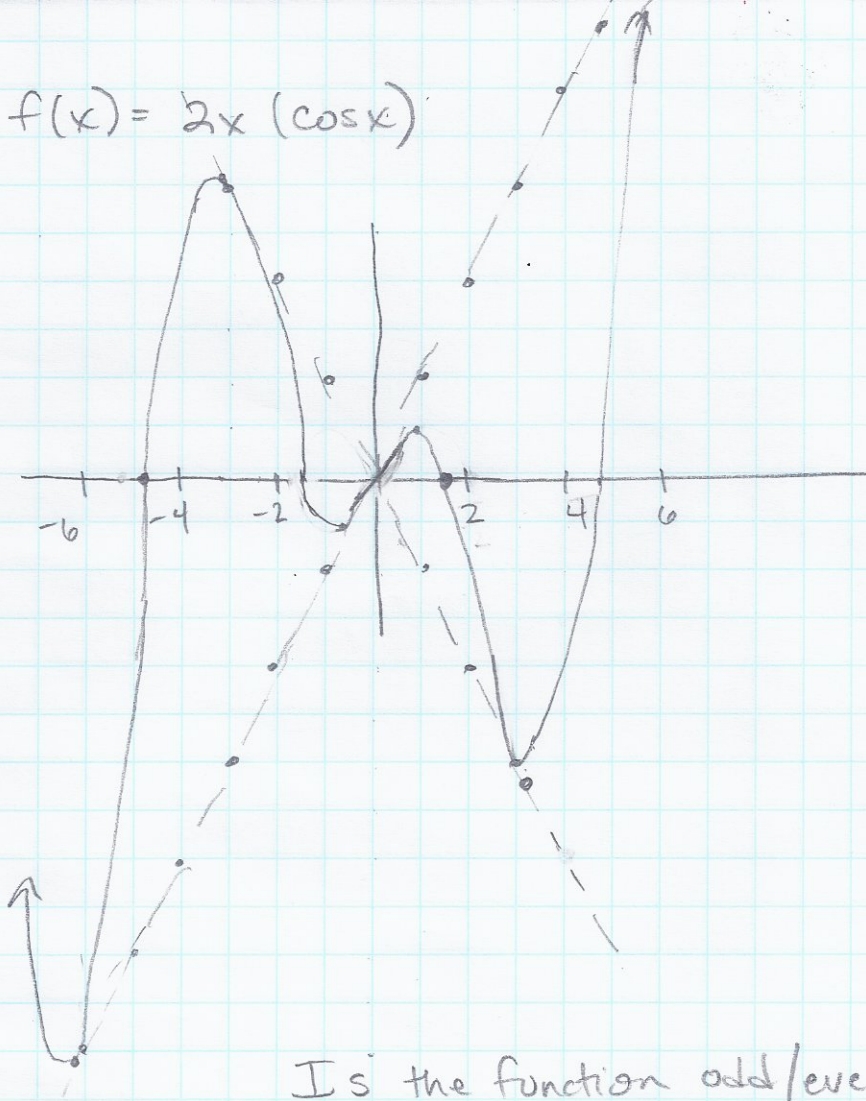


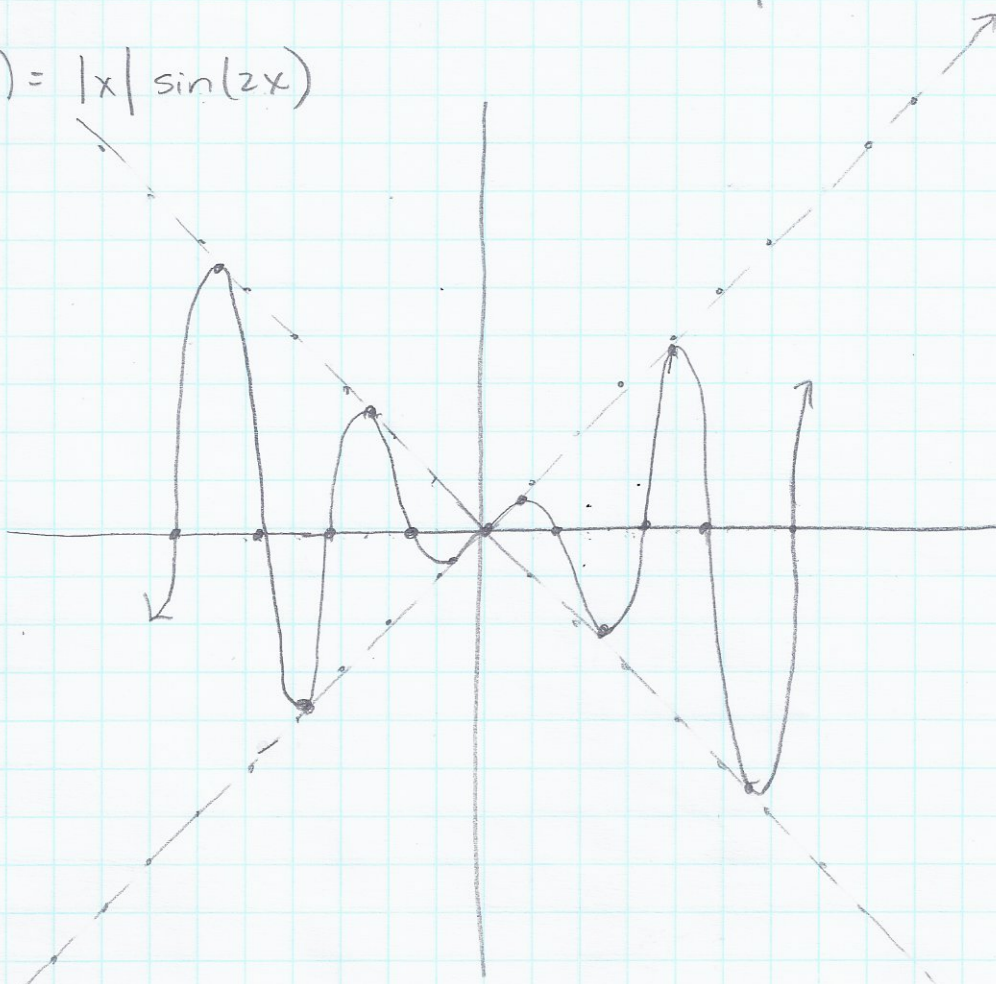
7. $f(x) = 2x \cos x$



	0	0
	$\frac{\pi}{4}$	1.1
1.57	$\frac{\pi}{2}$	0
3.14	π	-2π
4.7	$\frac{3\pi}{2}$	0
6.28	2π	4π

Is the function odd/even?

8. $f(x) = |x| \sin(2x)$



	0	0
0.78	$\frac{\pi}{4}$	$\frac{\pi}{4}$
1.57	$\frac{\pi}{2}$	0
2.4	$\frac{3\pi}{4}$	$-\frac{3\pi}{4}$
3.14	π	0
3.9	$\frac{5\pi}{4}$	$\frac{5\pi}{4}$
4.7	$\frac{3\pi}{2}$	0
5.5	$\frac{7\pi}{4}$	$-\frac{7\pi}{4}$
6.3	2π	0